





Excellence is in our nature

Established in 2003, Evergreen Developments Group specializes in creating high quality properties in prime locations across North Cyprus.

Evergreen has delivered over 2500 properties within 34 quality developments and more exciting projects to come with over 2000 units in next three years on the North Coast of Cyprus, to the East and West of Kyrenia City. From boutique projects with emphasis on exclusivity to grand hotel-like resorts with many facilities, from serene locations that offer outmost privacy to projects that are in close proximity to the city, from neat and cozy studio and one-bedroom apartments to luxury villas built by individual design and all the property options on the spectrum in-between – we pride ourselves in a great variety of developments and properties, designed to suit every taste and budget.

As pioneers in Wellness property in North Cyprus, Evergreen provides an unmatched lifestyle experience with its SPA & Wellness centres with the focus on well-being and anti-aging, nature trails, restaurants, and full management services including property letting, airport transfers, car hire and concierge.



Evergreen

Developments Group

CONTENTS

OUR CURRENT PROJECTS

8	AQUA VIEW
14	HORSESHOE BAY
20	LIGHTHOUSE
26	DEJA BLUE ECO WELLNESS RESORT
38	DEJA BLUE SUNSET
44	C'EST LA VIE
50	BLUEBERRY
56	AKANTHOU
66	SALOS
70	OASIS
82	TATLISU MARINA
84	KANTARA
90	HABITAT
96	APHRODITE BEACHFRONT RESORT
108	APHRODITE WELLNESS



- | | | | |
|---|------------------------------|----|---------------------------------------|
| 1 | EVERGREEN OFFICE | 7 | EVERGREEN SALES OFFICE |
| 2 | APHRODITE BEACHFRONT VILLAGE | 8 | EVERGREEN MAINTENANCE & RENTAL OFFICE |
| 3 | APHRODITE PARK RESIDENCE | 9 | RETREAT |
| 4 | APHRODITE WAVE SPA TOWER | 10 | AQUA WEST |
| 5 | APHRODITE WELLNESS | 11 | AQUAMARINE |
| 6 | APHRODITE AQUA | | CRYSTAL BAY MARINA |
| | EVERGREEN HQ | | HABITAT |
| | ALAGADI WATERFRONT HOMES | | C'EST LA VIE |
| | ALAGADI GOLF RESORT | | OASIS |
| | BLUEBERRY | | AQUAVIEW |
| | LIGHTHOUSE | | BLUE ROCK |
| | WATER LILY GARDEN | | AKANTHOU |
| | CRYSTAL BAY VILLAGE | | TATLISU MARINA |
| | CRYSTAL BAY PARK | | HORSESHOE BAY |
| | DEJABLUE ECO WELLNESS RESORT | | SALOS |
| | | | KANTARA BEACH FRONT |
| | | | KANTARA PHASE 2 |





AQUA VIEW VILLAS

Aquaview features 14 elegant three bedroom and four bedroom villas, each with its own garden, large rooftop terrace and optional private swimming pool. This boutique project is set over two terraces providing great views of the Mediterranean Sea.

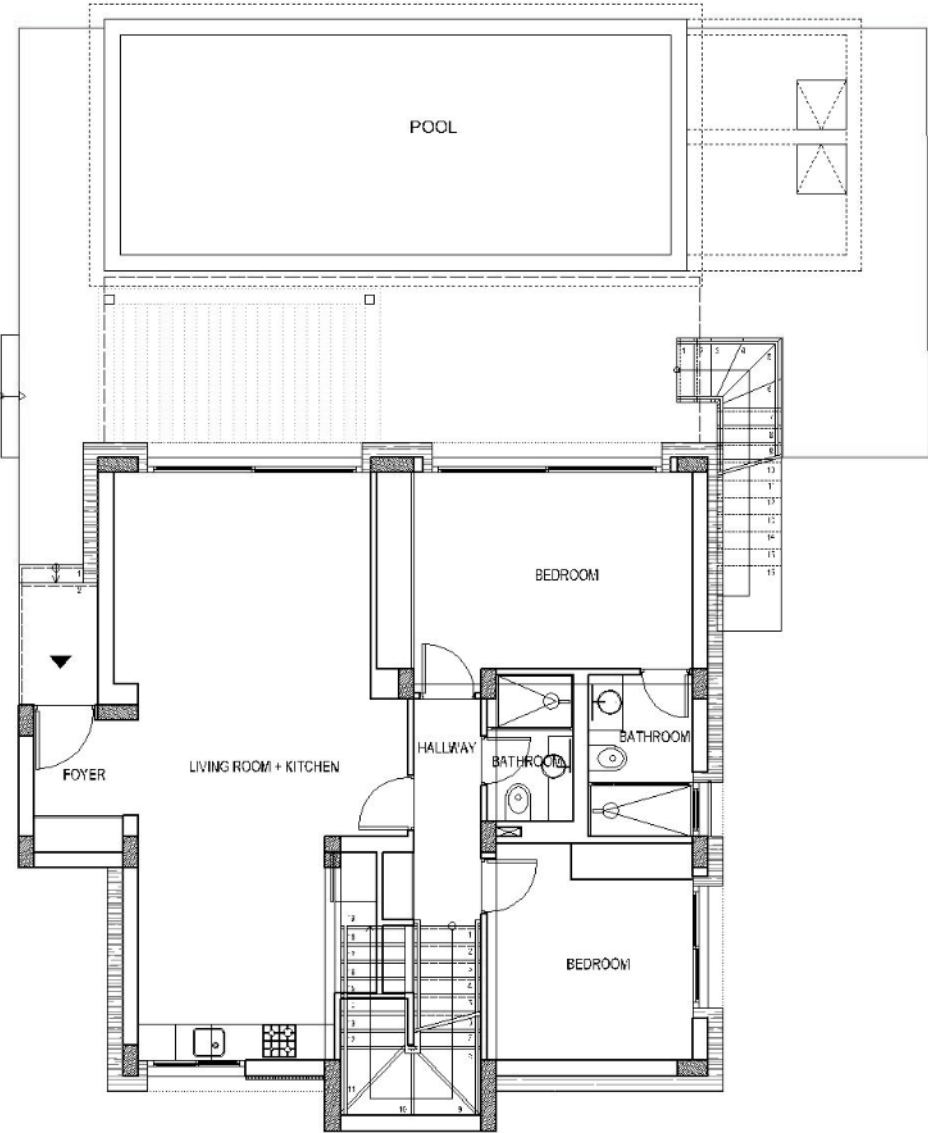
The development is just a short walk from the beach and is set in a breathtaking location just above an untouched bay.



AQUA VIEW

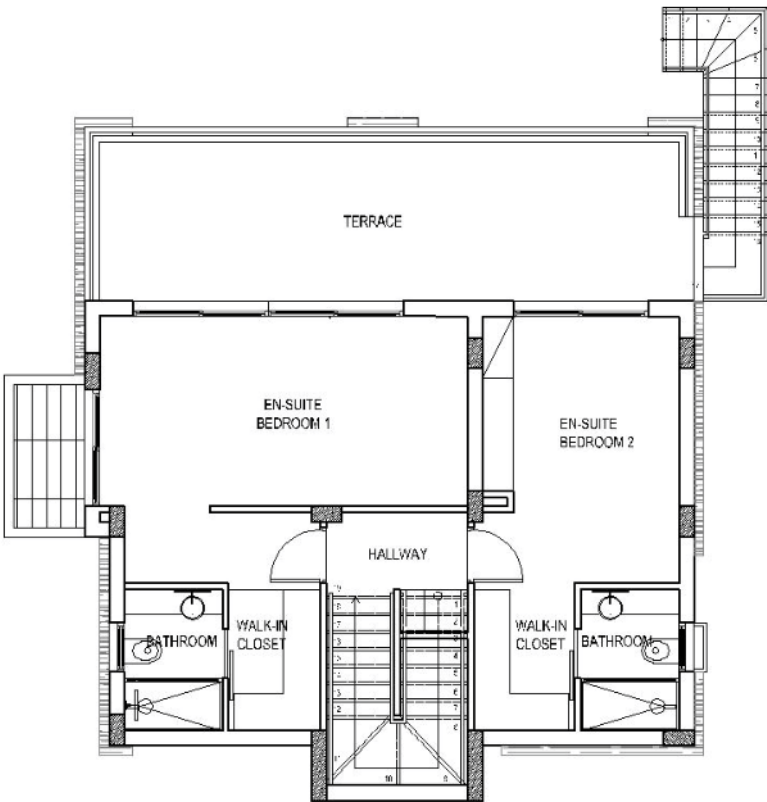
Villas

4 BEDROOM GROUND FLOOR PLAN



For illustration purposes only.

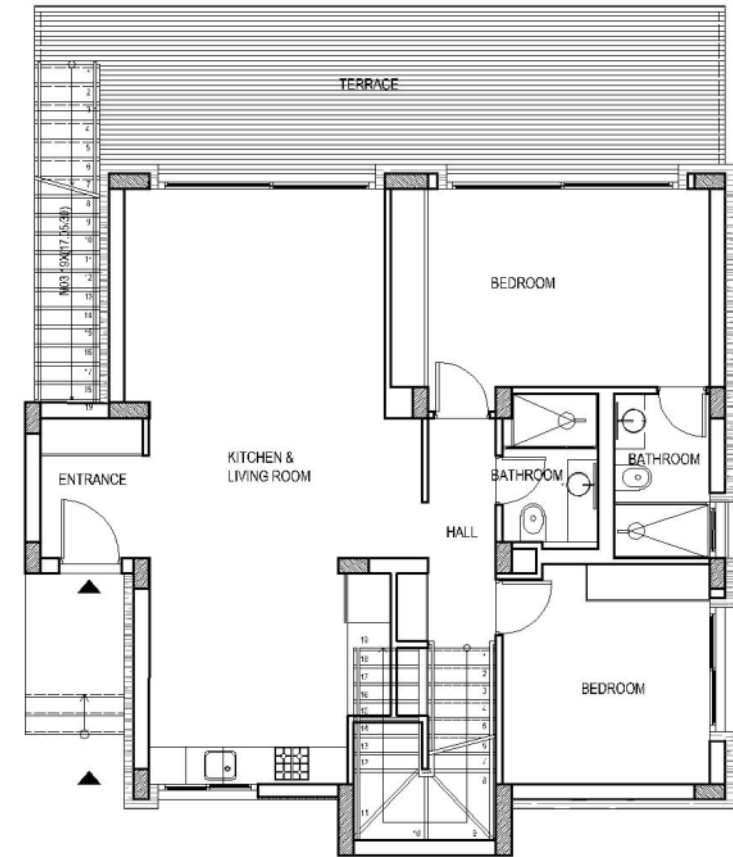
4 BEDROOM FIRST FLOOR PLAN



AQUA VIEW

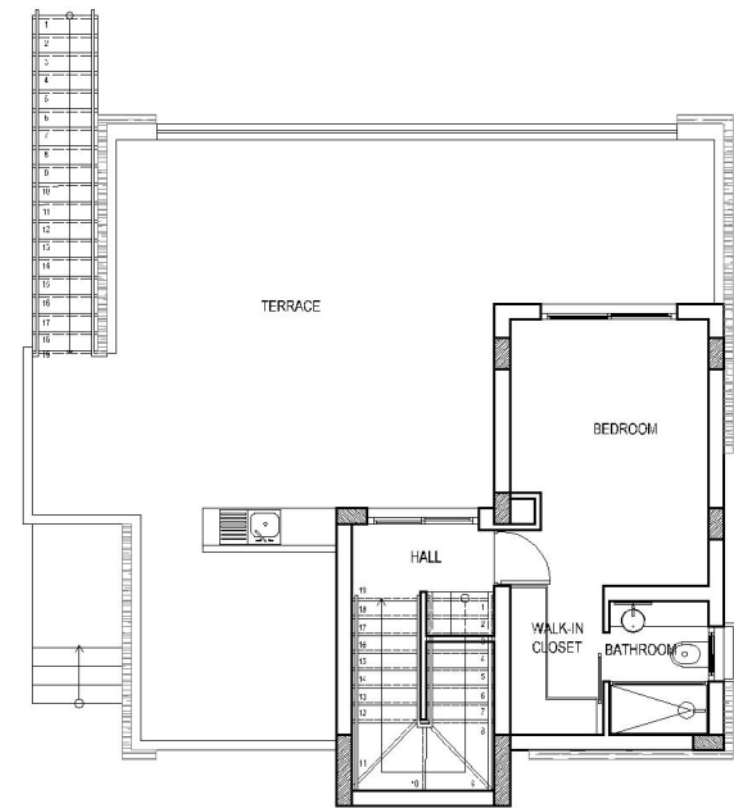
Villas

3 BEDROOM GROUND FLOOR PLAN



For illustration purposes only.

3 BEDROOM FIRST FLOOR PLAN

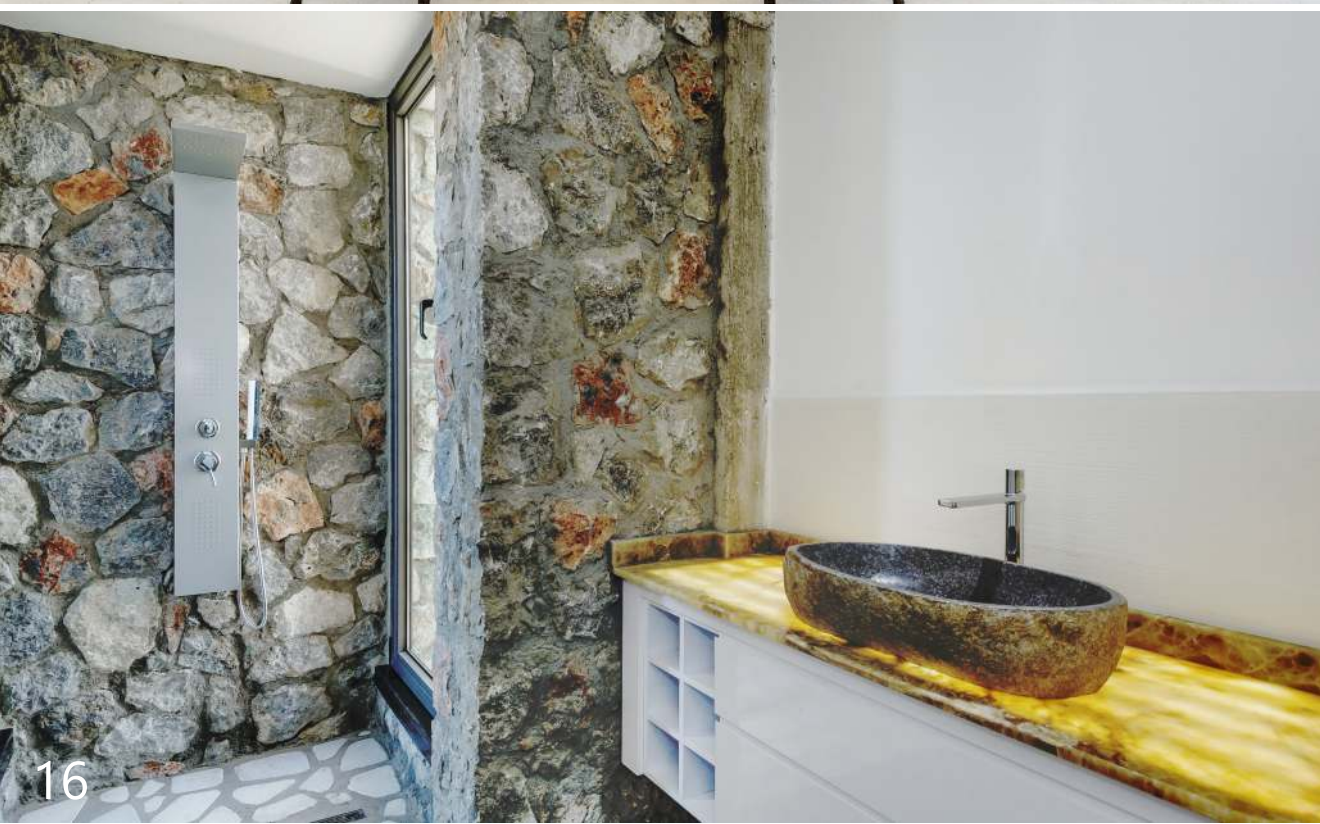


HORSESHOE BAY VILLAS

Horseshoe Bay is a unique development, featuring beachfront villas with direct and private access to a picturesque bay and fully maintained beach.

Each of these magnificent homes is custom-built to the clients specifications with three to seven bedroom configurations, a 70m2 infinity swimming pool which merges into the architecture and an optional self contained guesthouse.



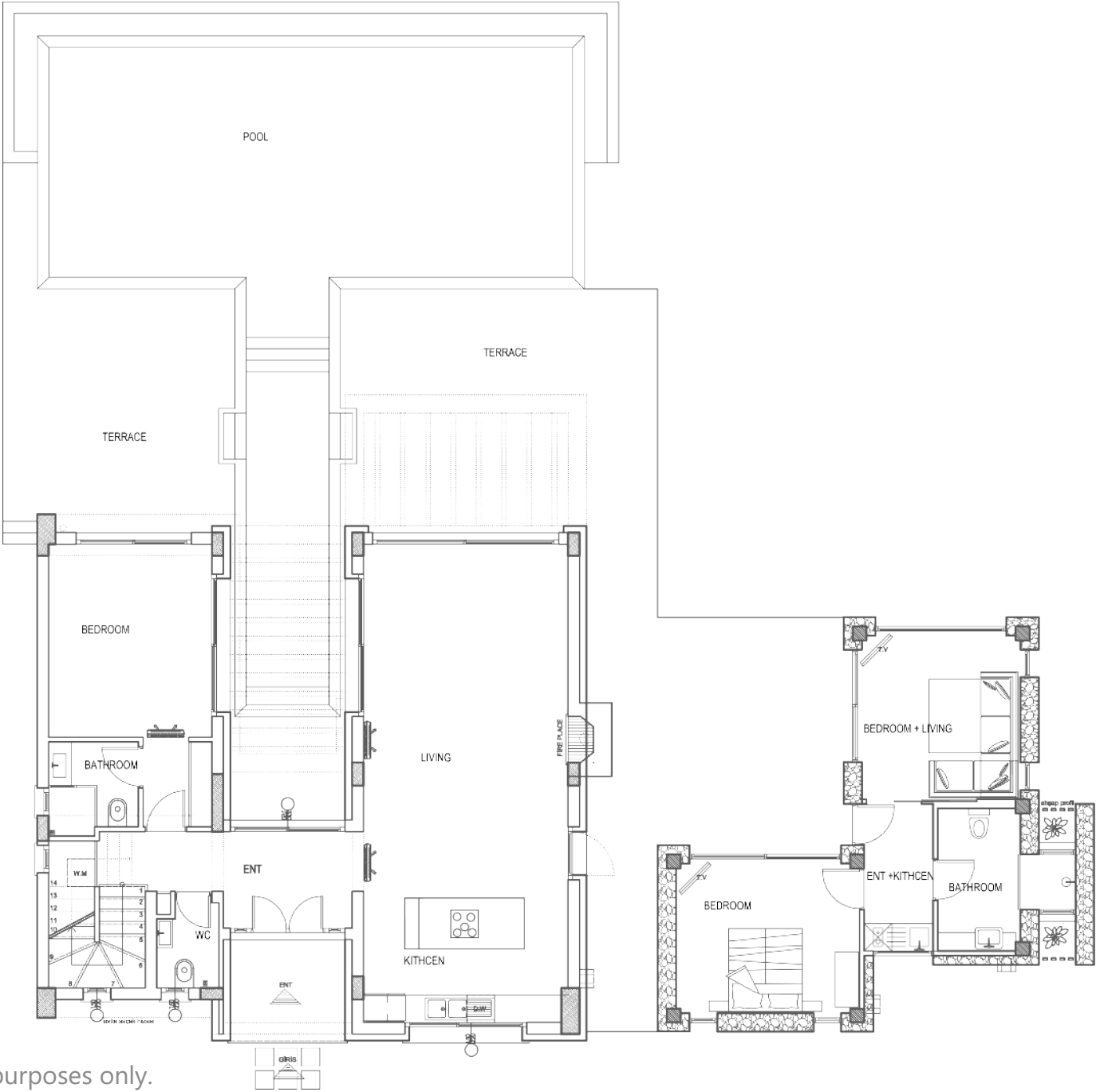


HORSESHOE BAY

Luxury Villa

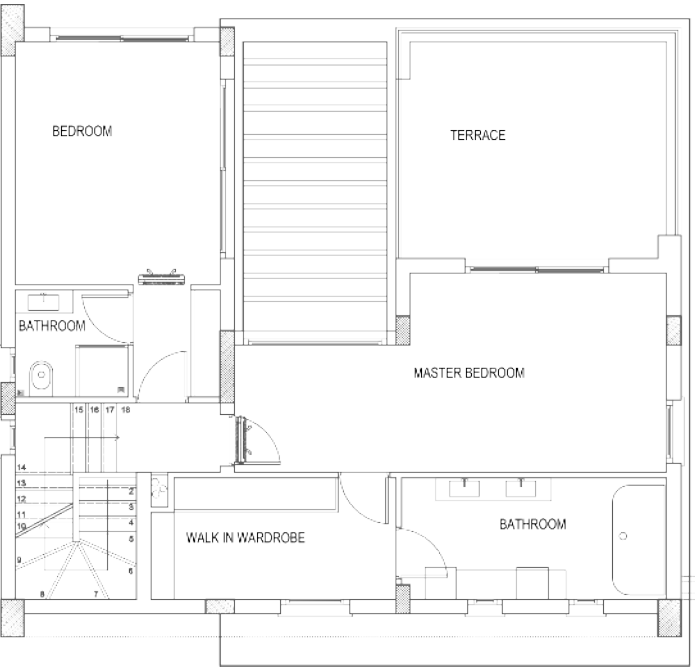


5 BEDROOM GROUND FLOOR PLAN



For illustration purposes only.

5 BEDROOM FIRST FLOOR PLAN



LIGHTHOUSE

This new seafront project is only moments away from Esentepe beach. The project offers a selection of two and three bedroom garden apartments, penthouses and spacious three to four bedroom bungalows.

Each property in Lighthouse boasts direct sea views, a private pool as well as access to communal facilities including a well-equipped gym and sauna. At Lighthouse you are just five minutes away from the supermarket and the local village of Esentepe which has a great selection of restaurants and markets. Lighthouse is also a perfect spot for golf and tennis lovers with the Korineum Gold & Tennis Club located just five minutes away.



BEACH



COMMUNAL
POOL



FITNESS



SAUNA







ES
DO
HI
G

DEJA BLUE ECO WELLNESS RESORT

Deja Blue is a beachfront project on the North coast of Cyprus, the very first resort on the island with the concept of eco-wellness. This development prides itself on its beautiful seafront location, just 100 metres away from the sea with the Kyrenia Mountain range as a backdrop.

At Deja Blue you will find an exceptional range of anti-ageing, rejuvenation and wellness services in addition to its focus on nutrition with foods grown at Deja Blue.

This project enjoys access to its own maintained beach with a beautiful blue lagoon, ideal for swimming and snorkelling. Facilities include spa, fully equipped gym, sauna, indoor heated pool, beach bar, a la carte restaurant and olympic sized communal pool in the main complex.



BEACH



BAR



RESTAURANT



COMMUNAL
POOL



CHILDREN'S
PLAY GROUND



SPA



SAUNA



STEAM ROOM



JACUZZI



YOGA



FITNESS







BEACH



DEJABLU



FLA
BLUE



DEFA BLUE



DEJA BLUE SUNSET

When the name says it all: this development is a part of our seafront eco-wellness resort Deja blue with a full access to its numerous facilities. At the same time, it is set aside and offers the privacy of a boutique project, in which all 14 units have their own uninterrupted sea and sunset view.

Imagine waking up to the sound of waves and the view of the Mediterranean - in Deja Blue Sunset this can come true. A short walk will take you to the destination of your choice: whether it is the SPA with indoor pool, sauna and treatment rooms, a maintained beach with a beautiful lagoon where the rock formations created a natural swimming pool in the sea, or a seafront a la carte restaurant neighboring a fruit garden and offering breathtaking views.



BEACH



BAR



RESTAURANT



COMMUNAL
POOL



CHILDREN'S
PLAY GROUND



SPA



SAUNA



STEAM ROOM



JACUZZI



YOGA



FITNESS





DEJA BLUE SUNSET

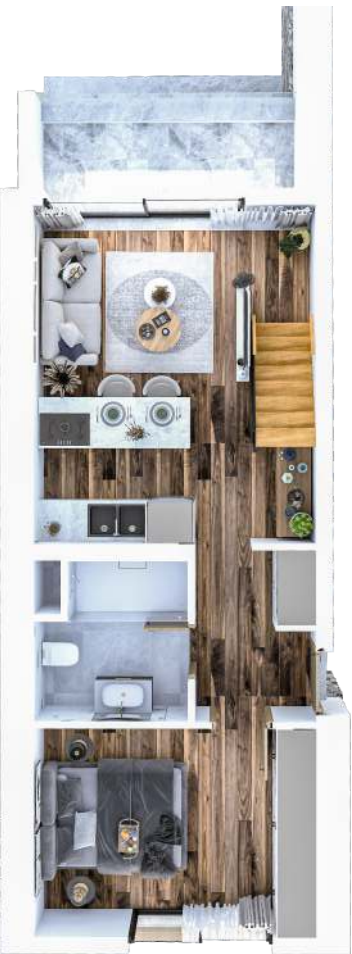
DEJA BLUE SUNSET



1+1 GARDEN APARTMENT
FLOOR PLAN



2+1 LOFT APARTMENT
GROUND FLOOR PLAN



2+1 LOFT APARTMENT
UPPER FLOOR PLAN



For illustration purposes only.

C'EST LA VIE

C'est La Vie is set on a beautiful seafront location in Bahceli, North Cyprus. This development is made up of garden studios, one bedroom garden, duplex penthouse apartments and three bedroom bungalows.

We have adopted a terraced based design on the land to ensure that homeowners are able to enjoy unobstructed views of the sea. The site features a restaurant, a fully equipped gym, spa and will offer a range of anti-ageing and rejuvenation wellness treatments.

The project sits just minutes away from a maintained beach accessed via the old coastal road.





BEST LAYOUT



TEST LAUNCH

BLUEBERRY

Our new project Blueberry boasts a very convenient yet picturesque location where everything you need is only minutes away: from supermarket and pharmacy to a selection of restaurants and the Mediterranean Sea. Korineum Golf Resort with its Tennis club and maintained beach, as well as the sandy Alagadi Turtle beach are at your disposal nearby as well, whilst Kyrenia city is only a short 15 minutes' drive.

Blueberry offers 26 garden studio units and 26 one-bedroom and two-bedroom penthouse apartments.

Onsite you will find an outdoor swimming pool & gym, and everything else is nearby, making this a perfect location for your new home in Cyprus or a great choice for a vacation home alike.



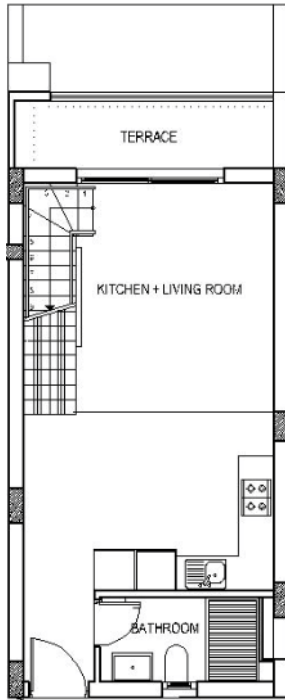


BLUEBERRY

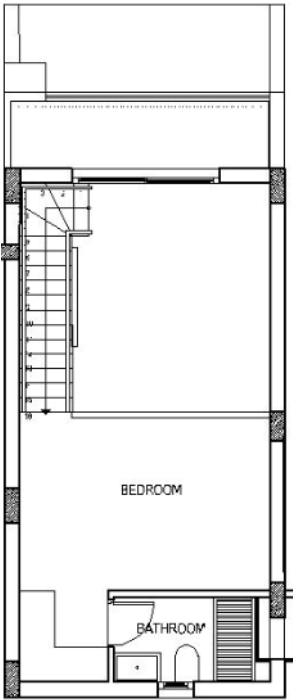
GARDEN STUDIO
FLOOR PLAN



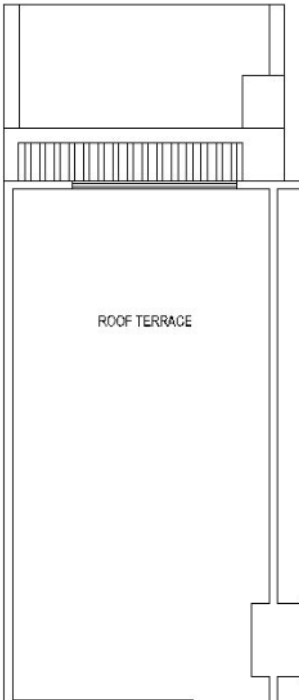
1+1 PENTHOUSE
LOWER FLOOR PLAN



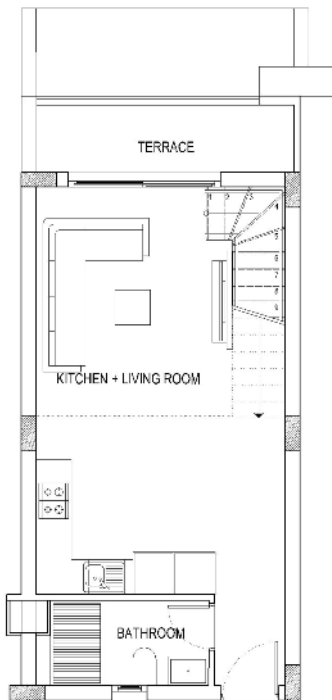
1+1 PENTHOUSE
UPPER FLOOR PLAN



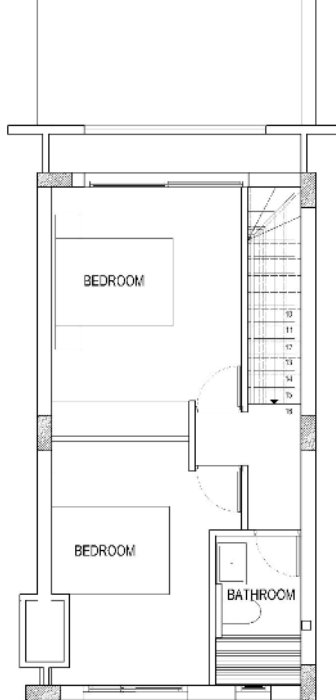
1+1 PENTHOUSE
ROOF FLOOR PLAN



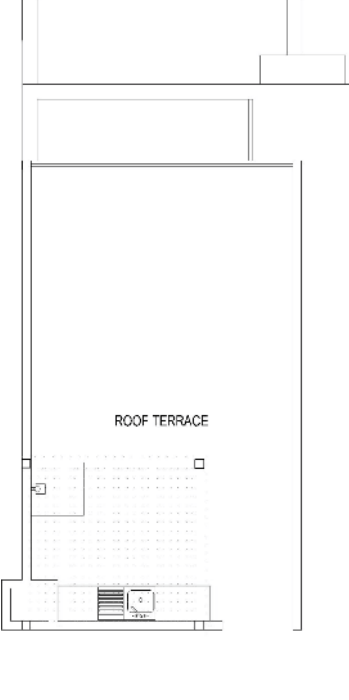
2+1 PENTHOUSE
LOWER FLOOR PLAN



2+1 PENTHOUSE
UPPER FLOOR PLAN



2+1 PENTHOUSE
ROOF FLOOR PLAN



For illustration purposes only.

For illustration purposes only.

AKANTHOU

This intimate coastal development on the northern shore of Cyprus is designed for those looking to relax in a tranquil and aesthetically pleasing Mediterranean setting.

With only a walk to the sea and plenty facilities onsite, this development is comprised of 91 units, including one-bedroom, two-bedroom and three-bedroom apartments as well as stunning three-bedroom bungalows with a private garden.

The project is spread along the coastal line, maximizing the dazzling view of the sea and sunset for every unit.

Our indoor heated pool, sauna, and steam room are perfect for unwinding and rejuvenating after a long day of exploring, whilst the outdoor pool, surrounded by lush greenery is the perfect place to soak up the Mediterranean sun.



COMMUNAL
POOL



INDOOR
HEATED POOL



FITNESS



SAUNA



STEAM ROOM



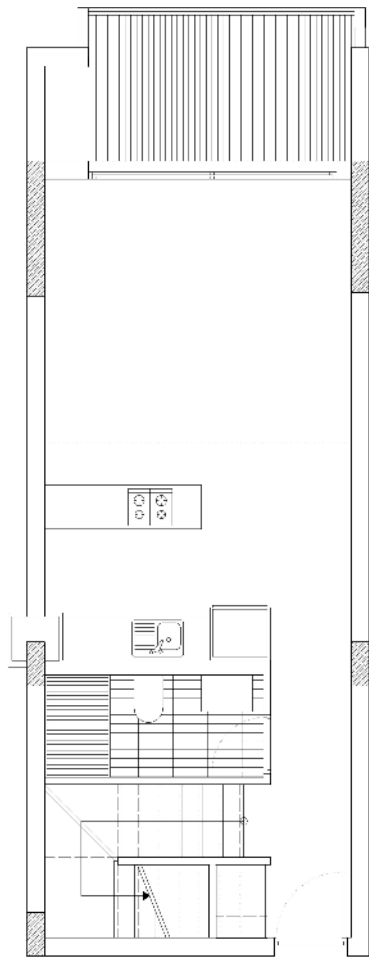
YOGA



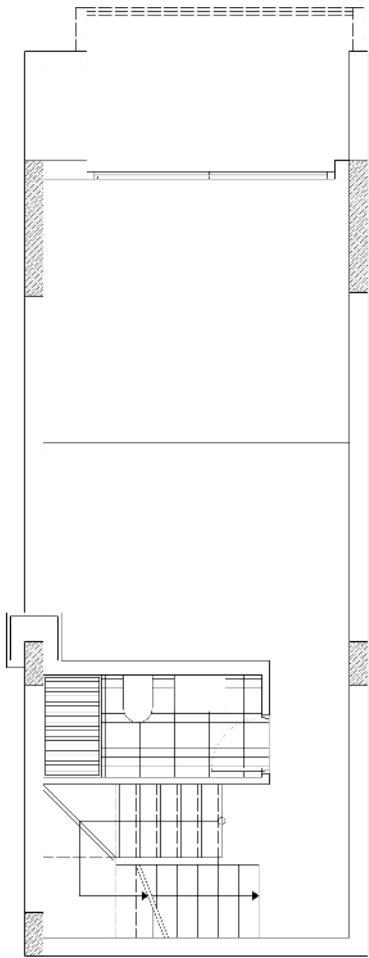


PO
TH
KAN

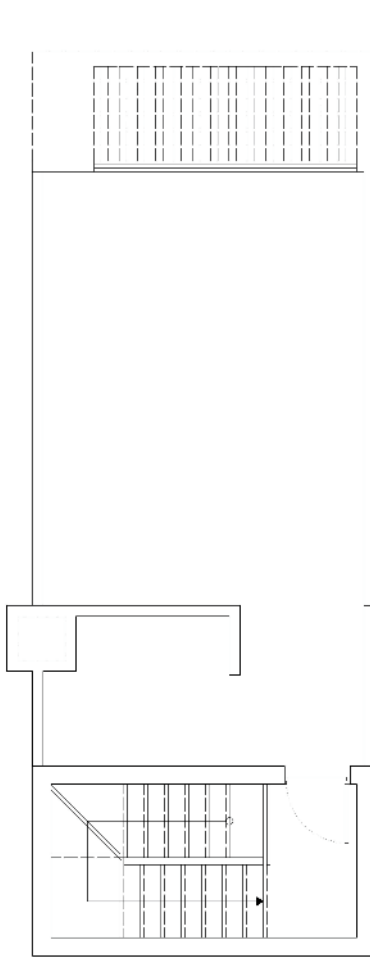
1+1 DUPLEX PENTHOUSE
LOWER FLOOR PLAN



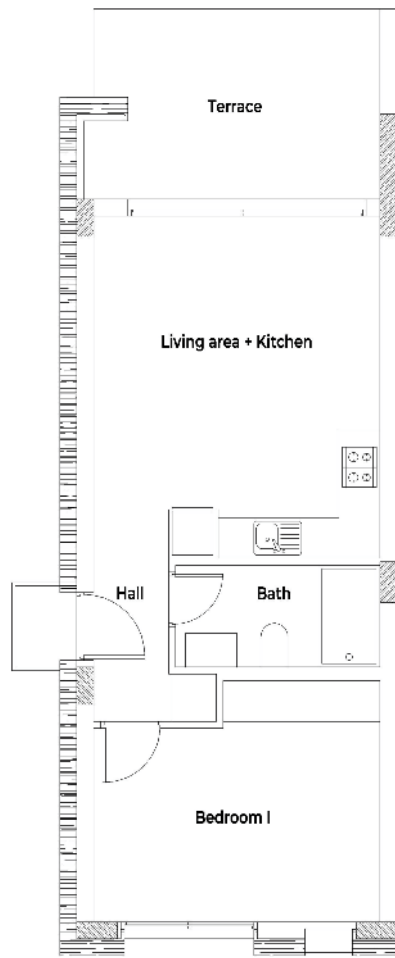
1+1 DUPLEX PENTHOUSE
UPPER FLOOR PLAN



1+1 DUPLEX PENTHOUSE
ROOF FLOOR PLAN



1+1 CORNER
GARDEN FLOOR PLAN



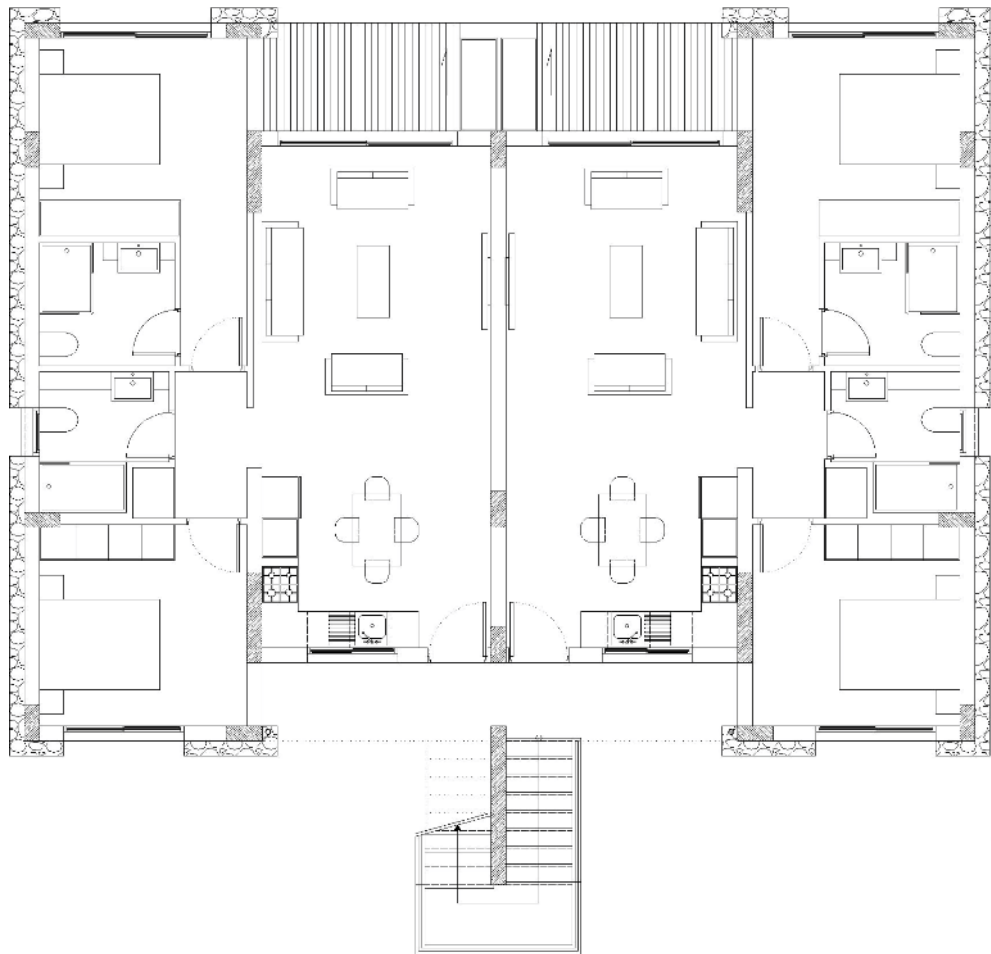
1+1 GARDEN
FLOOR PLAN



For illustration purposes only.

For illustration purposes only.

2+1 GARDEN FLOOR PLAN

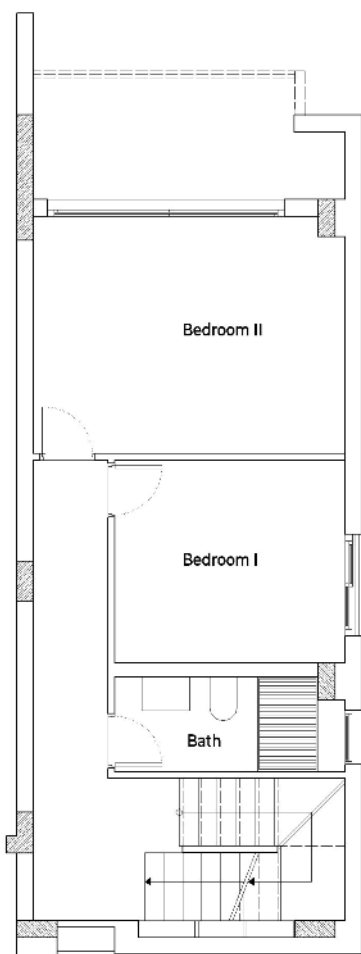


For illustration purposes only.

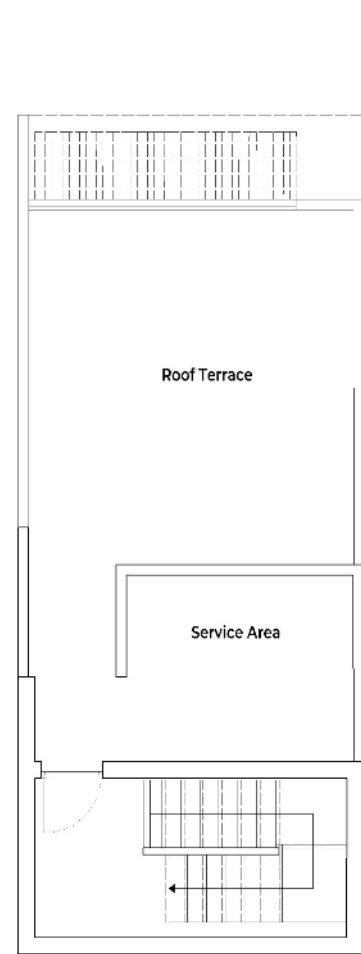
2+1 DUPLEX PENTHOUSE
LOWER FLOOR PLAN



2+1 DUPLEX PENTHOUSE
UPPER FLOOR PLAN

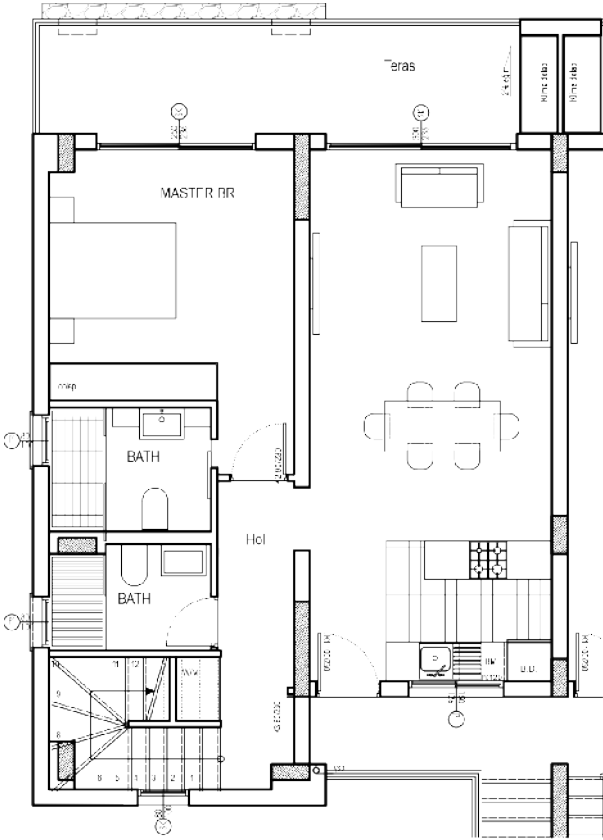


2+1 DUPLEX PENTHOUSE
ROOF FLOOR PLAN

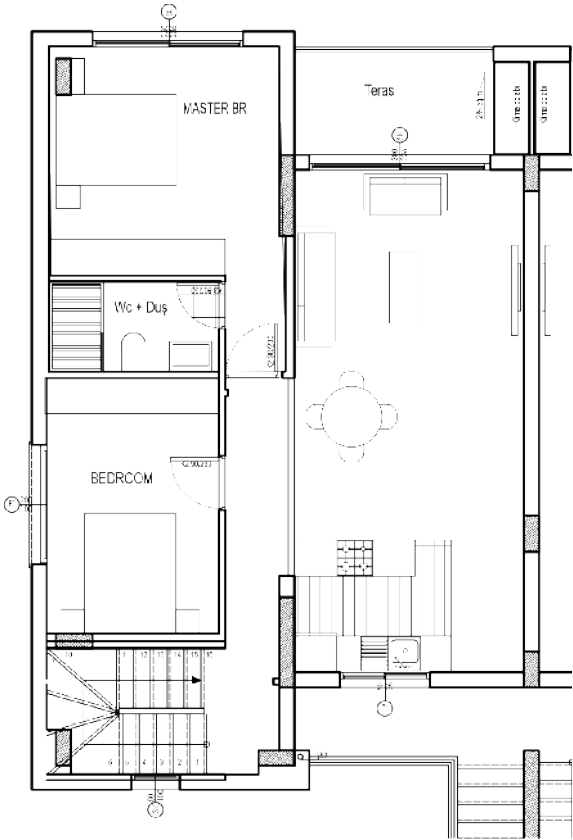


For illustration purposes only.

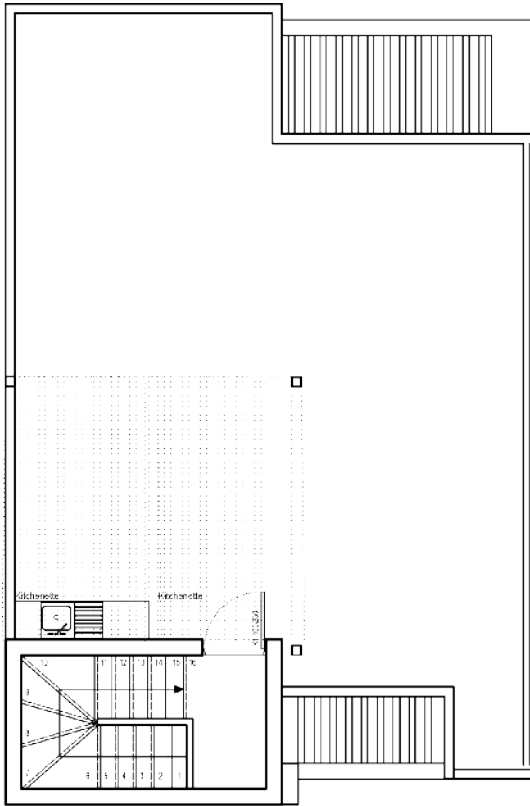
3+1 DUPLEX PENTHOUSE
LOWER FLOOR PLAN



3+1 DUPLEX PENTHOUSE
UPPER FLOOR PLAN

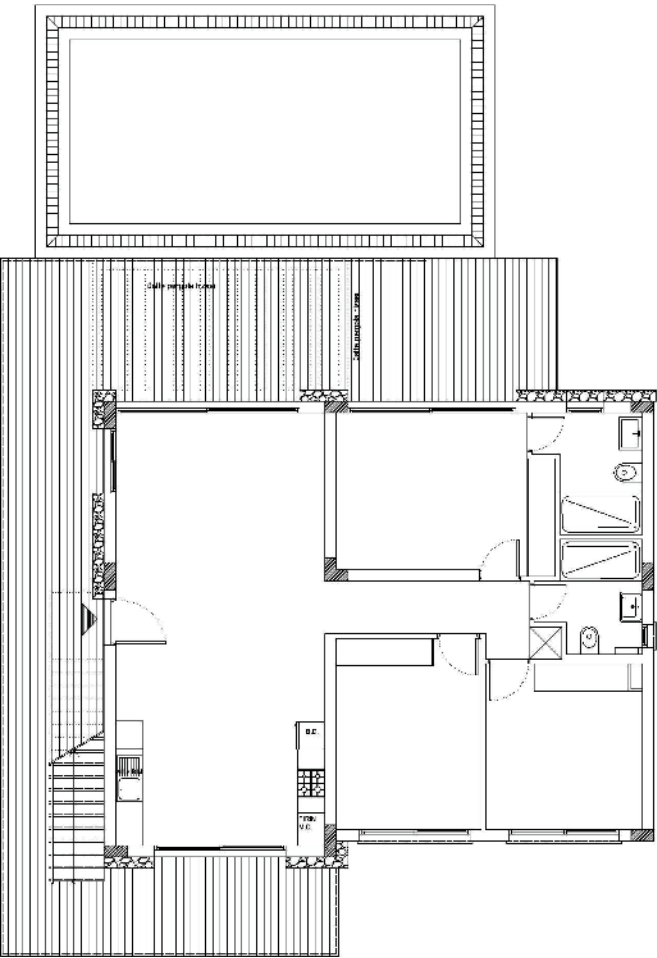


3+1 DUPLEX PENTHOUSE
ROOF FLOOR PLAN

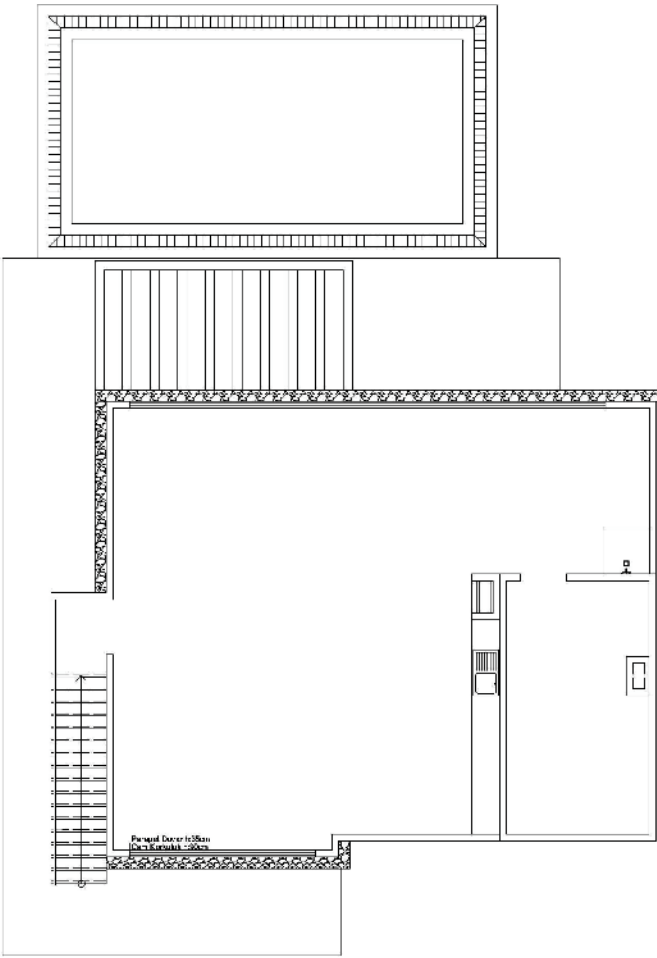


For illustration purposes only.

3+1 BUNGALOW FLOOR PLAN



3+1 BUNGALOW ROOF PLAN



For illustration purposes only.

SALOS

Seafront boutique development of only 44 units in a breathtaking location. This project is designed to maximize sea and mountain views and offers a perfect getaway in the Mediterranean.

With 2 beautiful lagoons in a walking distance, gym, sauna and swimming pool on the site this is THE place for those who are looking to enjoy their stay with idyllic views and maximum privacy.

At the same time, maintained sandy beach, mountain walking trails, equipped picnic areas, various restaurants and local shops are only a short 5 minutes’ drive away, creating a perfect blend of comfort, tranquility and relaxation.



BEACH



COMMUNAL
POOL



FITNESS



SAUNA





SOLAR

OASIS

In the foothills of green mountains, where a hiking trail begins at your doorstep, and overlooking the Mediterranean Sea just 700 meters away, lies our new project Oasis.

This full amenity resort is comprised of 174 properties, ranging from garden studio apartments to three-bedroom bungalows.

Residents will enjoy many facilities, including two outdoor swimming pools, gym, sauna, indoor heated pool, as well as restaurant & bar onsite.

Our design intention is to provide comfort and style, whilst embracing the Mediterranean feel and scenery. Thus, the project is set over several terraces, cascading from mountains towards the sea and maximizing the views and privacy.



COMMUNAL
POOL



INDOOR
HEATED POOL



SPA



SAUNA



STEAM ROOM



YOGA



FITNESS



BAR

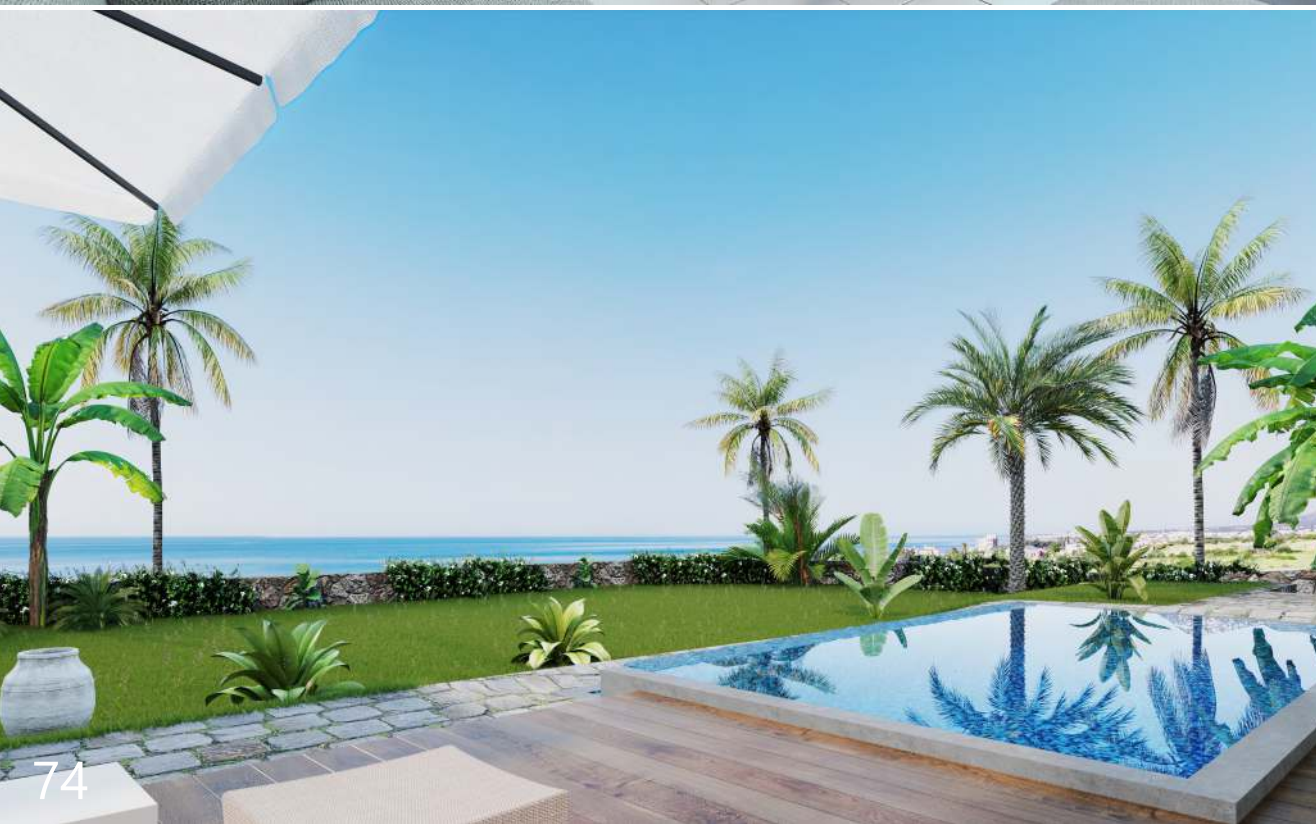


RESTAURANT





3 BEDROOM BUNGALOW TYPE A

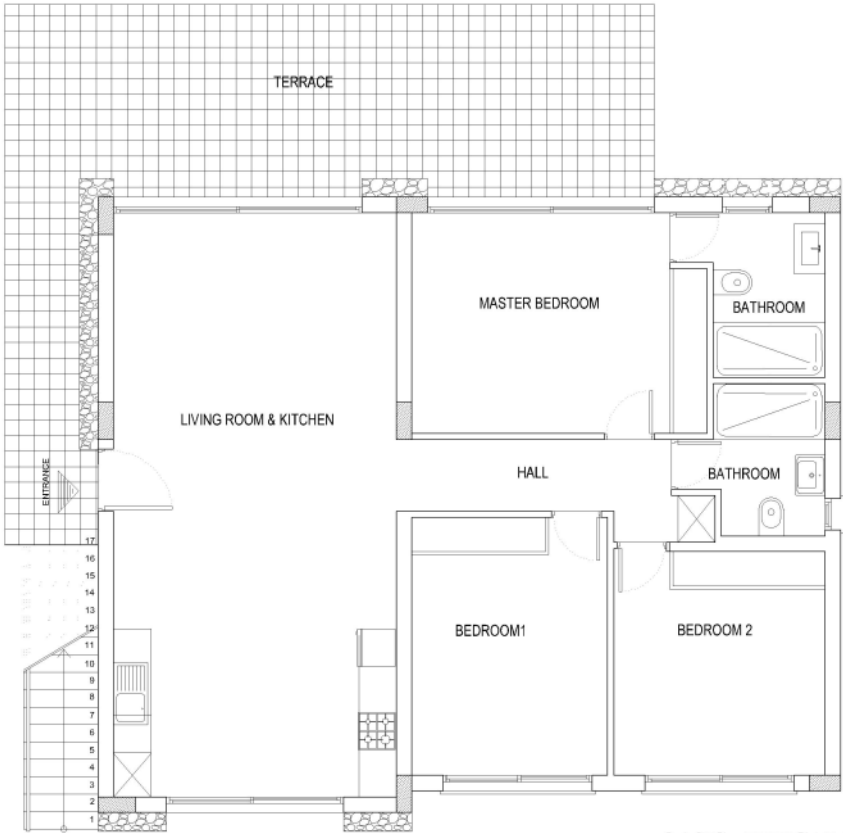


SAFARI

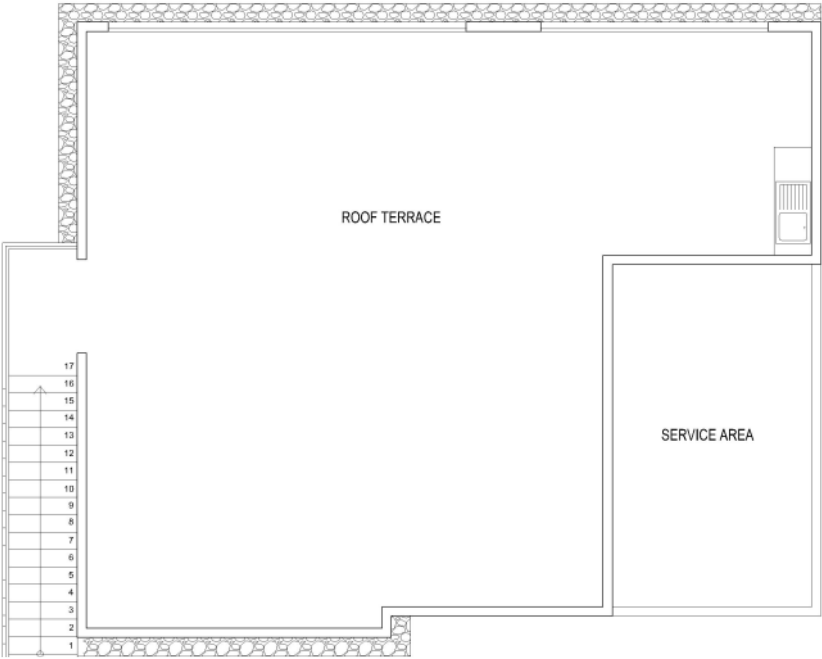
3 BEDROOM BUNGALOW TYPE B

OASIS

BUNGALOW TYPE A 3+1
GROUND FLOOR PLAN



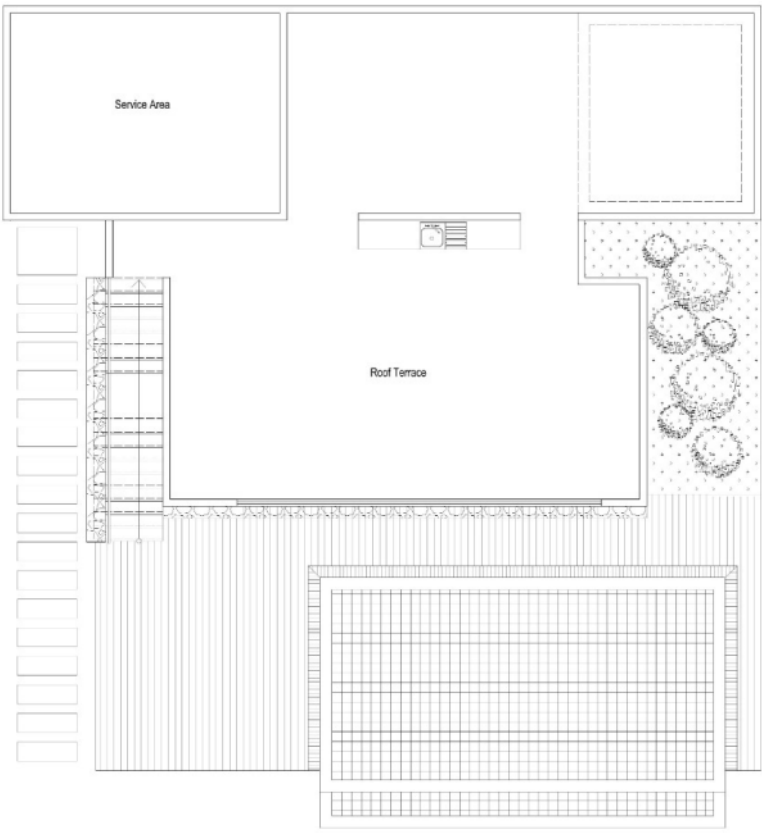
BUNGALOW TYPE A 3+1
ROOF FLOOR PLAN



BUNGALOW TYPE B 3+1
GROUND FLOOR PLAN



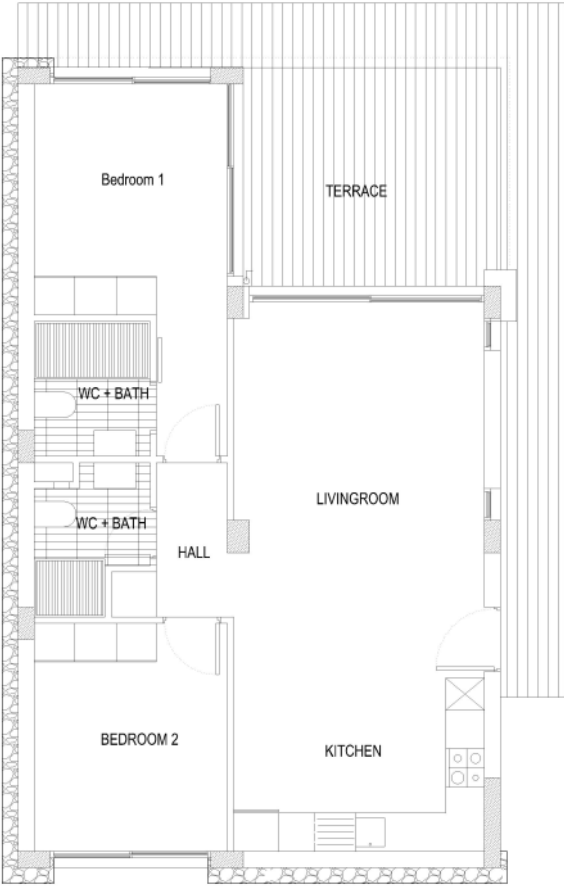
BUNGALOW TYPE B 3+1
ROOF FLOOR PLAN



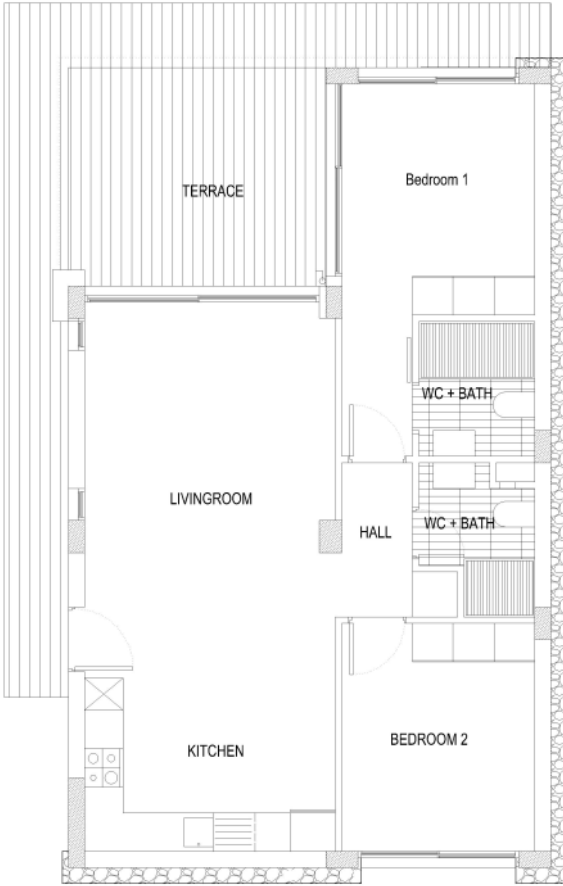
For illustration purposes only.

For illustration purposes only.

2+1 GARDEN
APARTMENT FLOOR PLAN



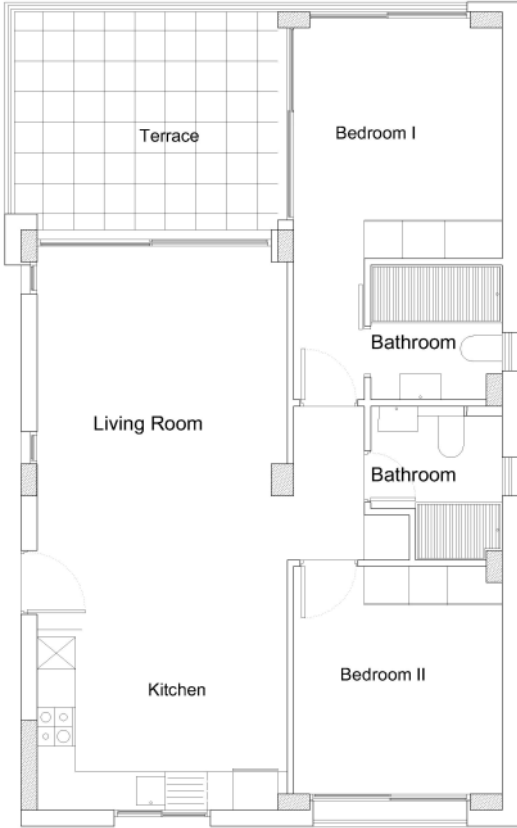
2+1 GARDEN
APARTMENT FLOOR PLAN



2+1 PENTHOUSE
APARTMENT FLOOR PLAN



2+1 PENTHOUSE
APARTMENT FLOOR PLAN





| OASIS

STUDIO GARDEN
FLOOR PLAN

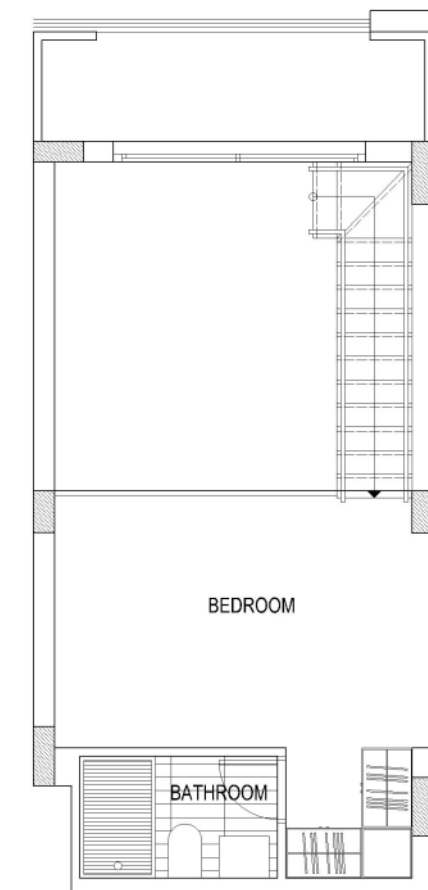


For illustration purposes only.

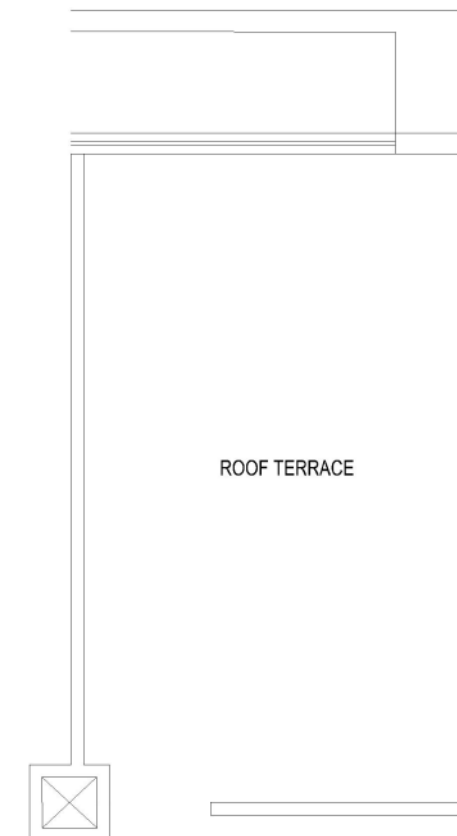
1+1 DUPLEX PENTHOUSE
GROUND FLOOR PLAN



1+1 DUPLEX PENTHOUSE
FIRST FLOOR PLAN



1+1 DUPLEX PENTHOUSE
ROOF FLOOR PLAN



For illustration purposes only.

TATLISU MARINA

Ideal project for those who love the Mediterranean Sea as much as we do!
Located only 150 meters from a maintained beach and only 250 meters from a lovely marina, this boutique development will allow you to truly explore the island from the sea.

The project features 52 apartments with options of cozy one-bedroom garden apartments and spacious one-bedroom and two-bedroom penthouses with private rooftop terraces.

Onsite amenities include outdoor swimming pool, gym, sauna, and landscaped gardens, whilst all the other facilities can be found only 5 minutes away: from pharmacy to supermarket, from petrol station to a beauty salon and more.



BEACH



COMMUNAL
POOL



FITNESS



SAUNA



KANTARA

A true oasis of tranquility located in the idyllic surroundings of Kantara Castle in Northern Cyprus. Our resort offers a unique combination of holistic wellness and relaxation, with 124 beautifully designed units that provide the perfect escape from the stresses of daily life.

The resort's location is a great starting point for exploring the natural beauty of Northern Cyprus. With the magnificent mountains and the azure waters of the Mediterranean Sea nearby, there's no shortage of breathtaking sights to discover. Take a hike in the nearby mountains, explore the local flora and fauna, or simply soak up in the sun on the sandy beach that is steps away.

Phase one of a larger project, with even more facilities and entertainment to come, Kantara resort offers you to relax in our indoor heated pool, sauna, and steam room, or indulge in one of our many massage treatments in our dedicated massage rooms. Our outdoor pool provides a refreshing escape from the heat of the day, while the restaurant serves a range of delicious dishes prepared using the finest locally sourced ingredients.

Whether you're seeking a romantic escape, a family getaway, or a solo retreat this beachfront development has everything you need to make your stay unforgettable.



BEACH



COMMUNAL
POOL



INDOOR
HEATED POOL



FITNESS



RESTAURANT



SAUNA



STEAM ROOM





KANTARA



HABITAT

Welcome to Habitat, our newest project on the north coast with unparalleled services and facilities. The visionary holistic concept combines modern life, wellness, activities and business.

- Find everything you need at our Street Mall (11.000 m2 Commercial area)
- Take a stroll on the Habitat Boulevard - 1.4 km landscaped road, surrounded by cascading waterfalls
- Stay active at the indoor and outdoor sports facilities or on the designated bicycle and jogging lanes (total length: 3.5 km)
- Enjoy the new quality of lifestyle with a wide range of facilities.



AQUAPARK



BAR



RESTAURANT



COMMUNAL
POOL



CHILDREN'S
PLAY GROUND



FITNESS



SPA



SAUNA



STEAM ROOM



YOGA



WELLNESS



ANTI AGEING



HIKING



CYCLING



TENNIS



HEALTH CENTER



SUPERMARKET



SHOPS



PHARMACY



BAKERY



CAFETERIA



ATM



CINEMA



CAR RENTAL



ELECTRIC CAR
CHARGING



SHUTTLE
SERVICE



ONSITE
MANAGEMENT



CONCIERGE
SERVICE



LAUNDRY



PET
FRIENDLY





HABITAT





AQUA

PARK RESIDENCE

SPA RESIDENCE

APHRODITE BEACHFRONT VILLAGE

WELLNESS

APHRODITE BEACHFRONT RESORT

Aphrodite Beachfront Resort is situated in Gaziveren on the West Coast of North Cyprus, with easy access to towns and amenities. This fully functional resort village features its own beach, beach bar, surf school and water sports club, indoor heated pool, spa, conference centre, restaurants, mini market, mini golf, volleyball, children’s play room, yoga studio, club house and on-site management and lettings company.

Guzelyurt is just ten minutes away and is the fourth largest city in North Cyprus. There are many restaurants and shops to enjoy, including the popular Saturday farmers market.



BEACH



BAR



RESTAURANT



COMMUNAL
POOL



CHILDREN'S
PLAY GROUND



FITNESS



SPA



SAUNA



STEAM ROOM



JACUZZI



INDOOR
HEATED POOL

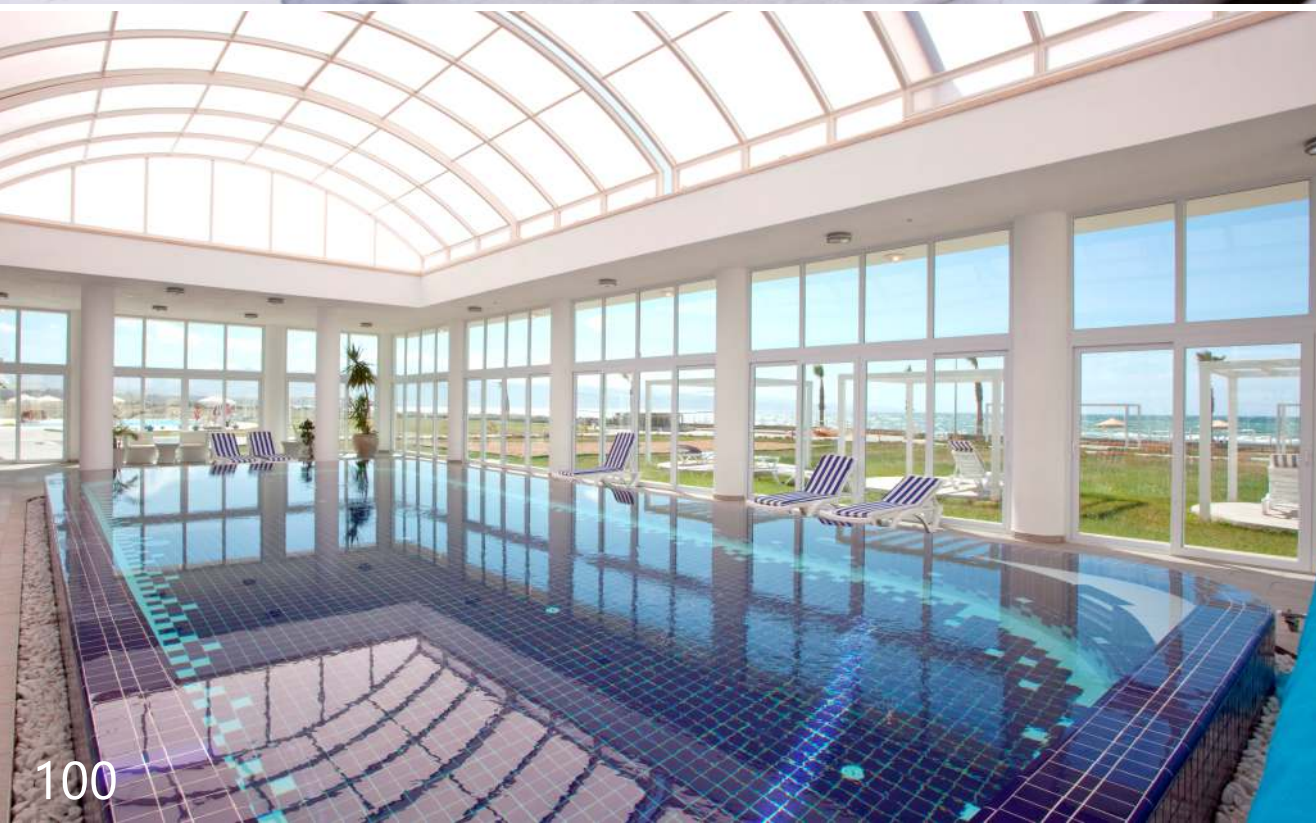


YOGA





APHRODITE WAVE SPA RESIDENCE





APHRODITE PARK RESIDENCE



APHRODITE
Wellness & Anti Ageing Resort



APHRODITE WELLNESS

The most advanced wellness
and anti-ageing centre
in the Mediterranean...















APHRODITE WELLNESS

Aphrodite Wellness is our most significant project to date comprising 604 units with a range of studio, one, two and three bedroom apartments. Set on the beautiful coastline in Morphou Bay. Aphrodite Wellness will become one of the largest and most advanced wellness and anti-aging centres in the Mediterranean offering a comprehensive range of treatments, facilities and services that are focused on wellbeing and longevity.

Aphrodite Wellness will offer hotel-like facilities & services including, but not limited to:

- Maintained beach
- Outdoor swimming pools
- Well-equipped modern gym
- Yoga & meditation suites
- Wellness & SPA: sauna, steam room, hammam, jacuzzi & massage therapy
- Indoor heated swimming pool
- Cryo-sauna
- Functional medical centre
- Beauty and anti-ageing centre
- Advanced diagnostics and check-up centre
- Landscaped parks & gardens
- Surfing & Water Sports Club
- Restaurants

 BEACH	 BAR	 RESTAURANT
 CHILDREN'S PLAY GROUND	 INDOOR HEATED POOL	 FITNESS
 SAUNA	 STEAM ROOM	 JACUZZI
 YOGA	 SPA	 COMMUNAL POOL





WELNES

Studio





WELLNESS
1 Bedroom

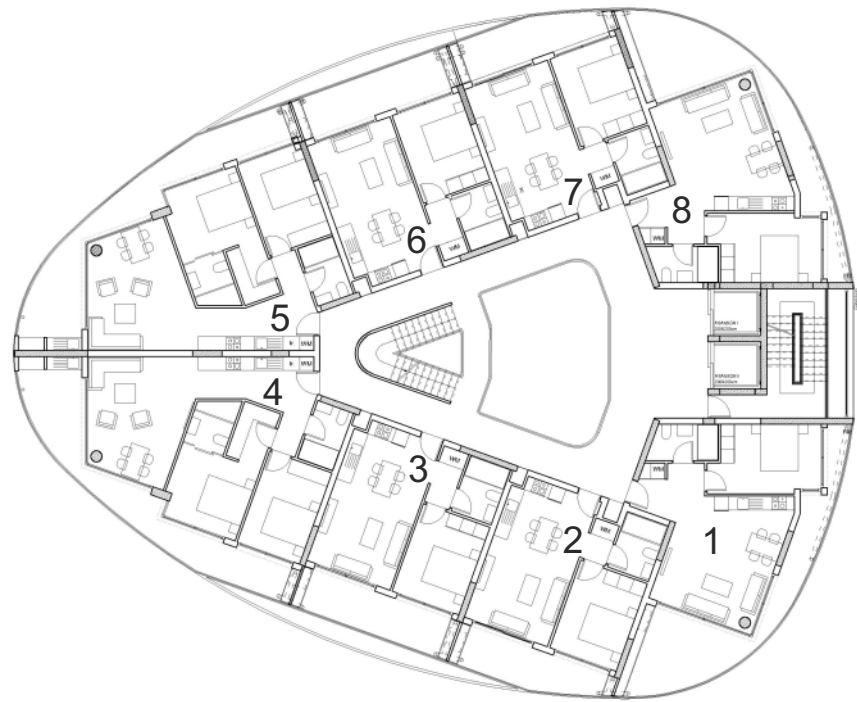


WELLNES

2 Bedroom

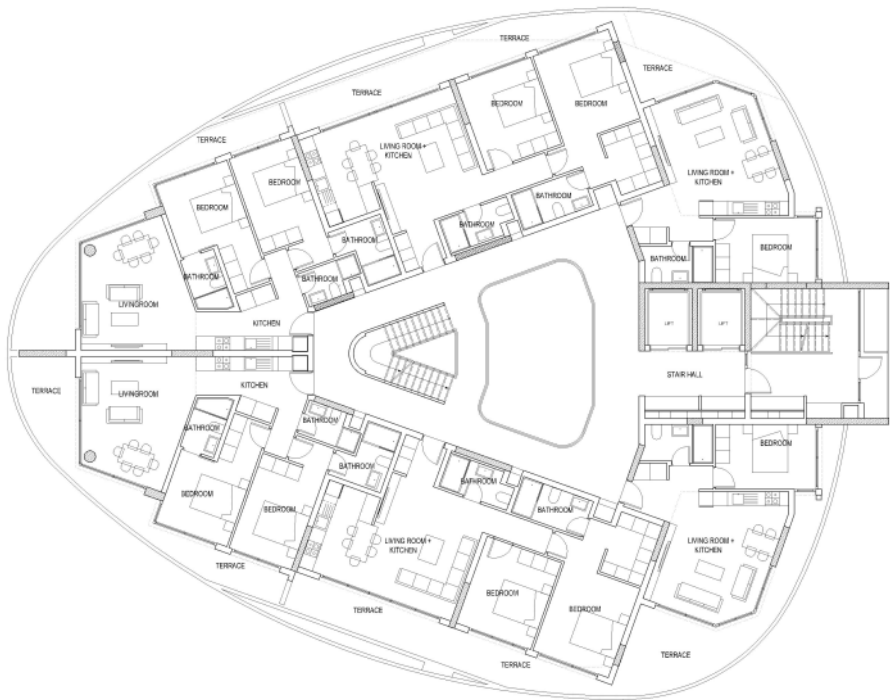


D BLOCK FLOOR PLAN: FLOORS 1-8

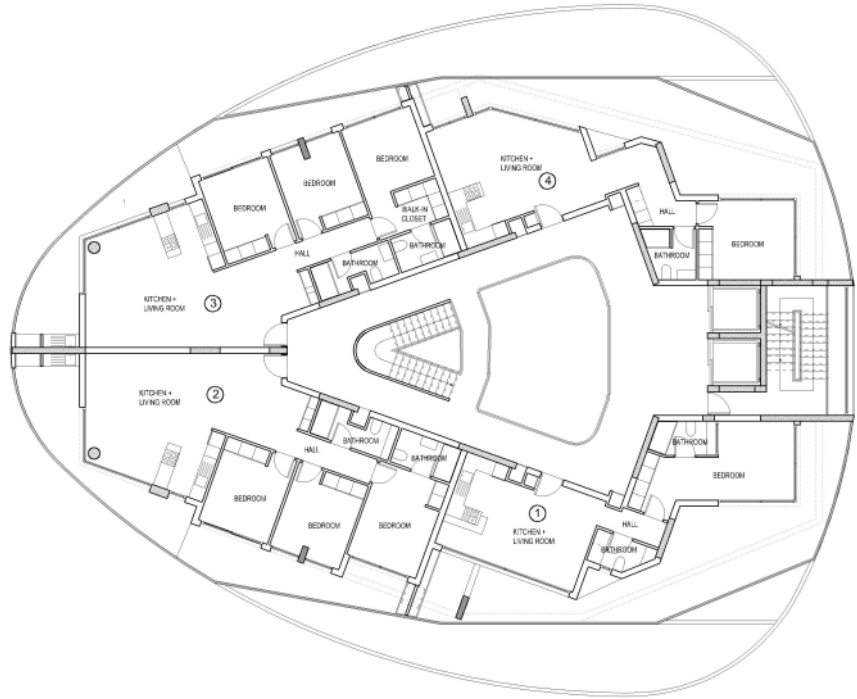


For illustration purposes only.

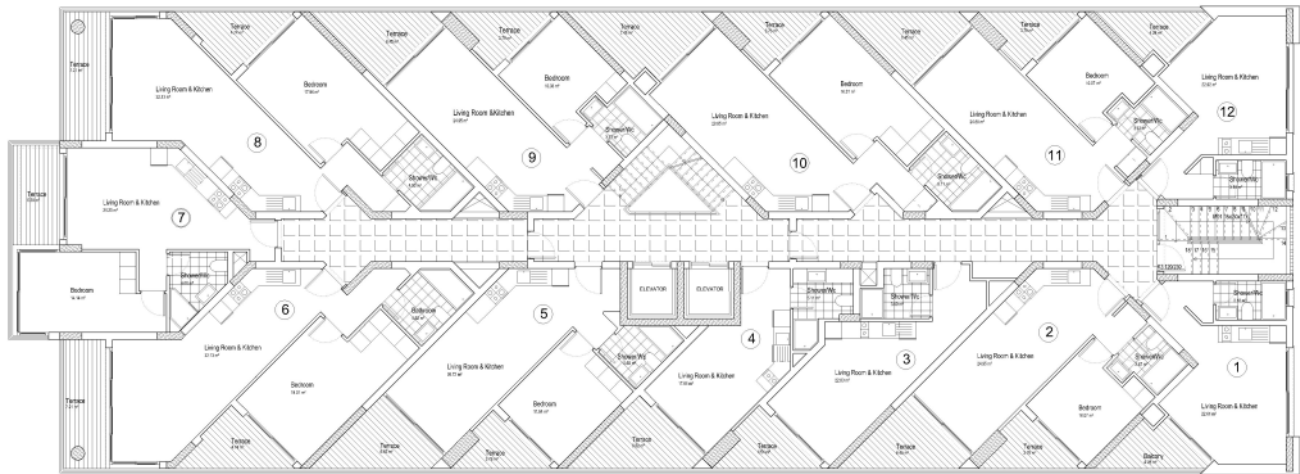
·D BLOCK FLOOR PLAN: FLOOR 9



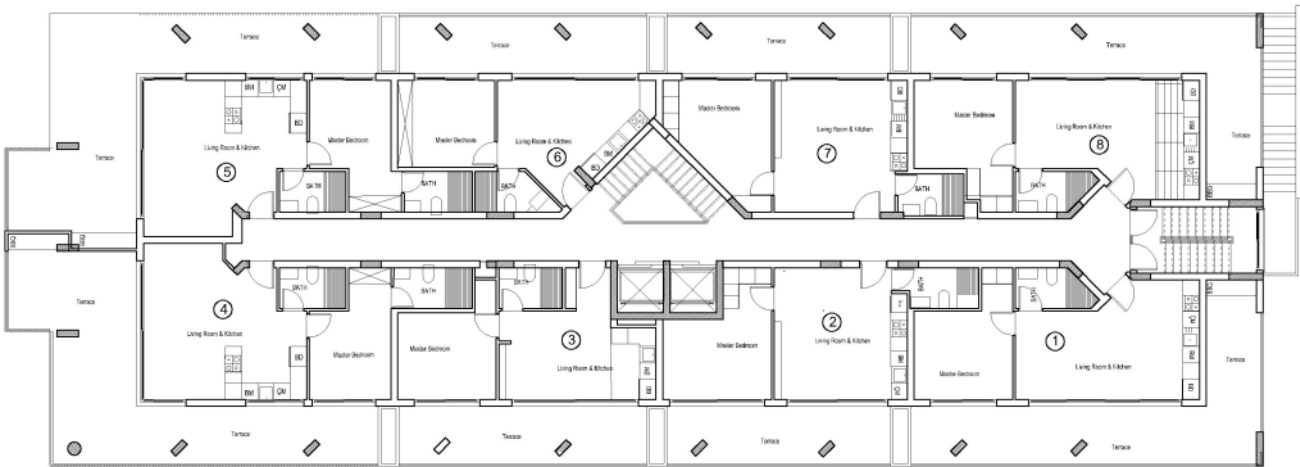
·D BLOCK FLOOR PLAN: FLOOR 10 (PENTHOUSE)



E BLOCK FLOOR PLAN: FLOOR 1-10



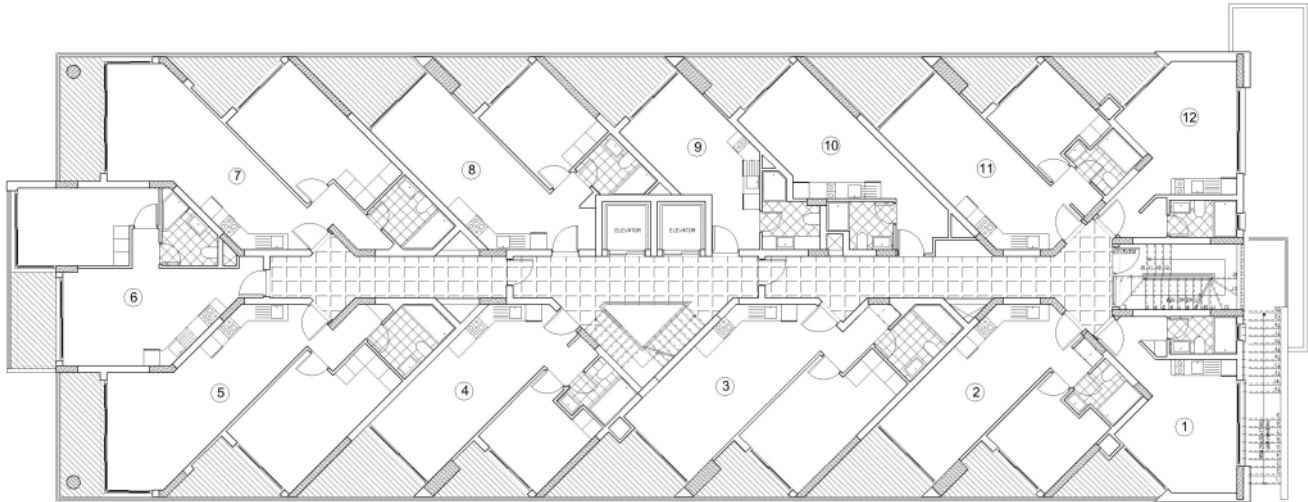
E BLOCK FLOOR PLAN: FLOOR 11 (PENTHOUSE)



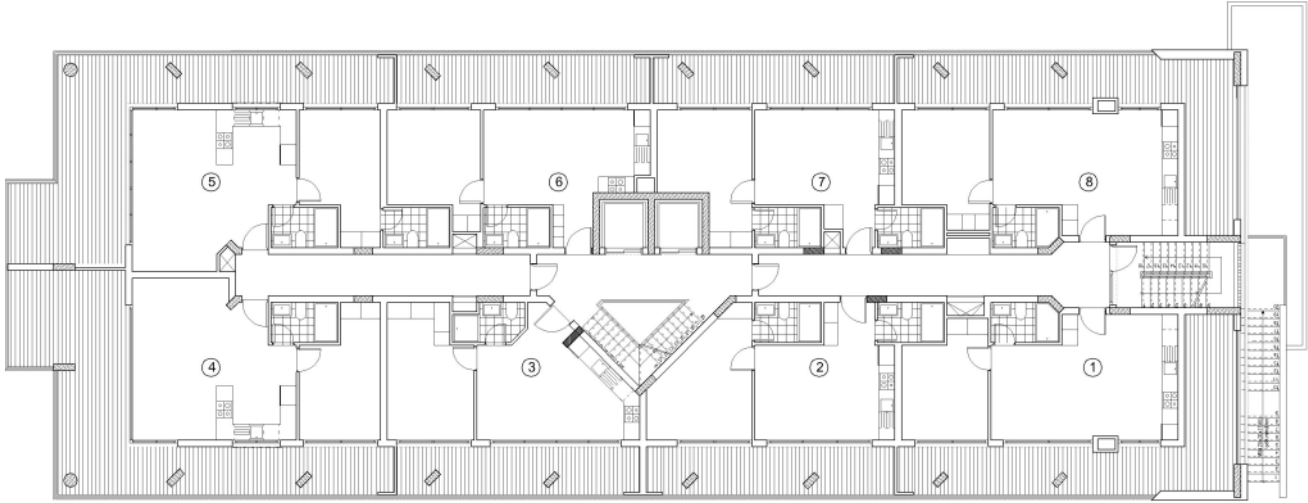
For illustration purposes only.

WELLNESS

F BLOCK FLOOR PLAN: FLOOR 1-10

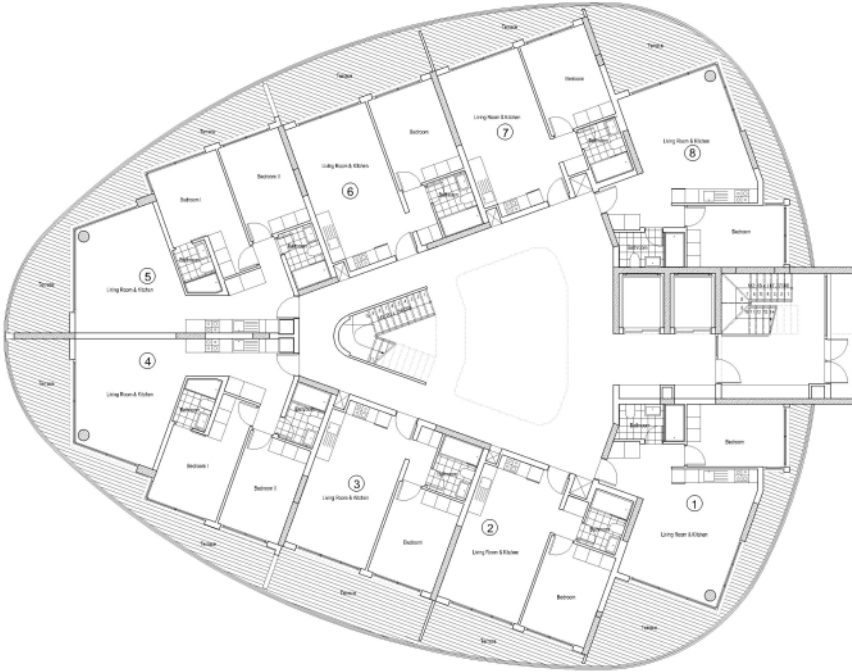


F BLOCK FLOOR PLAN: FLOOR 11 (PENTHOUSE)

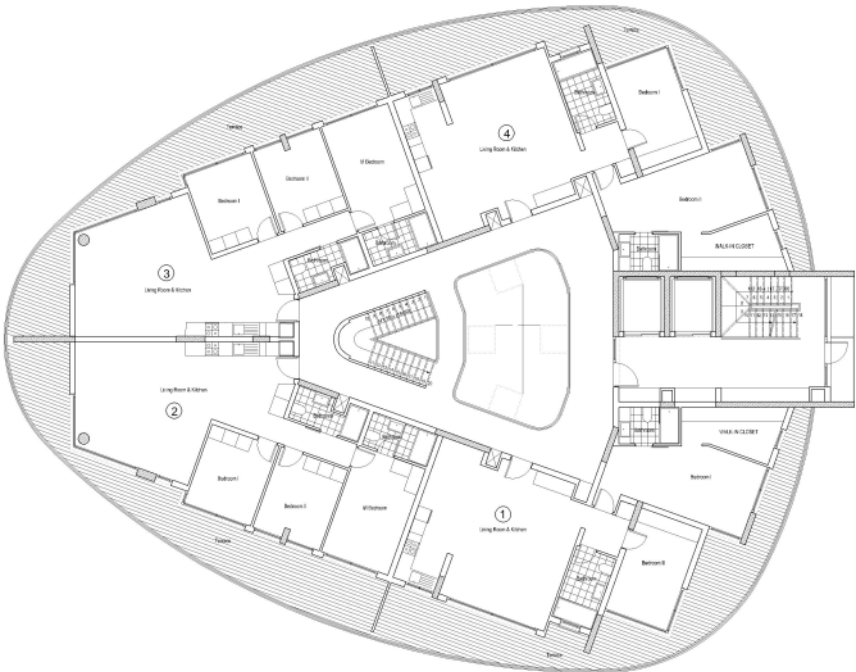


For illustration purposes only.

C BLOCK FLOOR PLAN: FLOORS 1-12



C BLOCK FLOOR PLAN: FLOOR 13 (PENTHOUSE)



For illustration purposes only.



• THE BUYING PROCESS

1. Reserve your property FOR only £2,000 / £5,000
2. Sign power of attorney with a lawyer, share information about your purchase
3. Contract signing
4. Flexible payment plan

- MONTHLY INSTALMENTS

- **QUARTERLY PAYMENTS**

• CONSTRUCTION STAGES

NOTES:

This image shows a full page of blank, lined paper. It features approximately 20 evenly spaced horizontal grey lines across its entire width, providing a template for handwriting practice or general note-taking. The margins are consistent on all sides.

